

No getting away from it - we all need these. That's why we still offer fabric drapes and gowns. But we are seeing an increasing move to disposables.

There's little worse than the washing machine breaking down when you have a full surgical load. Disposables remove the requirement for laundering and reduce the strain on your autoclaves.

Call us if you can't see the sizes you are looking for - we may well be able to source them for you.

## Re-Usable Cotton Theatre Wear

### Scrubs

Increasingly veterinary operating room procedures are coming into line with their human counterparts. Everyday clothing should not enter the clean areas.

### Plain Scrubs



Jade

Adriatic

Plain two pocket scrub tunics 'V' neck. 65/35 polycotton.

### PLAIN SCRUB TUNICS

<b>TW0013J</b>	XSmall	Jade
<b>TW0013A</b>	XSmall	Adriatic
<b>TW0003J</b>	Small	Jade
<b>TW0003A</b>	Small	Adriatic
<b>TW0005J</b>	Medium	Jade
<b>TW0005A</b>	Medium	Adriatic
<b>TW0007J</b>	Large	Jade
<b>TW0007A</b>	Large	Adriatic
<b>TW0009J</b>	XLarge	Jade
<b>TW0009A</b>	XLarge	Adriatic

Plain Scrub Trousers with drawstring waist. 65/35 polycotton.

### PLAIN SCRUB TROUSERS

<b>TW0014J</b>	XSmall	Jade
<b>TW0014A</b>	XSmall	Adriatic
<b>TW0004J</b>	Small	Jade
<b>TW0004A</b>	Small	Adriatic
<b>TW0006J</b>	Medium	Jade
<b>TW0006A</b>	Medium	Adriatic
<b>TW0008J</b>	Large	Jade
<b>TW0008A</b>	Large	Adriatic
<b>TW0010J</b>	XLarge	Jade
<b>TW0010A</b>	XLarge	Adriatic

Save 10% if you purchase one tunic and one trouser quote **TW000SET** when ordering

## Grahame Gardener Ltd

Veterinary Instrumentation is pleased to announce that we have linked up with Grahame Gardener Ltd, one of the UK's biggest suppliers of theatre wear, to provide the veterinary professional with a huge choice of scrubs, coats and related wear.

The latest Grahame Gardener Ltd Catalogue has a huge range of different scrubs, coats and related wear.

To view the **Grahame Gardener Catalogue** please visit our website at [www.vetinst.com](http://www.vetinst.com)

A copy of the Catalogue is available to view on-line or download.

### Scrub Tunics

Available in XS - XL (please state size when ordering) (larger sizes available - please ask for price).

#### UNISEX SIZE CHART

	XS	S	M	L	XL
BUST/CHEST (inches)	31 - 33	34 - 37	38 - 40	41 - 44	45 - 47
WAIST (inches)	24 - 26	28 - 30	32 - 34	36 - 38	40 - 42

### Royal Blue with Lime Trim Tunic



#### ROYAL BLUE WITH LIME TRIM TUNIC

**TW9051BL** Royal Blue with Lime Trim Tunic One pocket

### Malbec Tunic



#### MALBEC TUNIC

**TW8219M** Malbec Tunic Two pockets

**Grahame Gardener Ltd**

The latest Grahame Gardener Ltd Catalogue has a huge range of different scrubs, coats and related wear.

Please note we will not accept any returns of non-standard wear.

To view the Grahame Gardener Catalogue please visit our website at [www.vetinst.com](http://www.vetinst.com)

A copy of the Catalogue is available to view on-line or download.



**Clogs**



The latest Toffeln brochure has a huge range of footwear. The Brochure is available to view or download at [www.vetinst.com](http://www.vetinst.com)

**CODE: BRCLOG**

Please note we will not accept any returns of clogs, so please be accurate when ordering.

'Clean' areas require dedicated clean footwear. Slip on clogs are ideal. Available in a variety of styles and colours.

**Please state size required when ordering.**

**SURGICAL CLOGS**

- 0499W** White Clogs
- 0499LB** Light Blue Clogs
- 0800N** Navy Blue Clogs
- 0497BW** White Paws on Black
- SC052** Clean Clog
- 0497FW** White Paws on Fuschia

**Surgical Wellies**

White.

**Please state size when ordering.**



**SURGICAL WELLIES**

- SWL100** Surgical Wellies (state size when ordering)

**Operating Gowns**



1. Standard

2. Waterproof

1. Green Cotton with Long Sleeves and Cuffs, the Standard Operating Gown.
2. Waterproof Material, with Cuffs for minimal strike through. Pale Blue.

**OPERATING GOWNS**

- TW0001M** Operating Gown Cotton + Cuffs Medium
- TW0001L** Operating Gown Cotton + Cuffs Large
- TW0001XL** Operating Gown Cotton + Cuffs Extra Large
- TW0002** Operating Gown Waterproof with Cuffs Blue Large

**Client Expectations**

In 2009 a survey published in the Journal of Small Animal Practice (JSAP, Vol 50, September 2009) revealed a significant disconnect between client expectations of operating theatre practice and the reality of what happens in first opinion veterinary practice.

	Client Expectation %	Practice Reality %
Wearing of gloves	98.2	37.5
Wearing a gown	92.7	14.3
Wearing a hat	80.9	12.5
Wearing a facemask	80.2	10.7
Wearing theatre shoes	62.2	7.1
Using disposable drapes	42	19.6

The article also revealed that clients would be unhappy if their expectations were not met.

The main driver of theatre practice should be the wellbeing of our patients but how clients expect us to operate is not an insignificant factor. That veterinary practice should, ideally, conform to the standards indicated is not really in doubt. The survey shows that veterinary practice is in many cases not living up to client expectations. By implication if clients expect us to use these materials then they will be willing to pay for them.

This section includes a wide selection re-usable and disposable theatre wear and drapes.

## Re-useable Cotton Drapes

### Plain Surgical Drapes

Available in green balloon cloth (lightweight with fine weave) in either single or double thickness.

#### PLAIN SURGICAL DRAPES - BALLOON CLOTH - SINGLE PLY

<b>BDS1818</b>	Plain Drape 18" x 18" (45cm x 45cm)
<b>BDS2418</b>	Plain Drape 24" x 18" (60 x 45cm)
<b>BDS2424</b>	Plain Drape 24" x 24" (60 x 60cm)
<b>BDS3624</b>	Plain Drape 36" x 24" (91 x 60cm)
<b>BDS3636</b>	Plain Drape 36" x 36" (91 x 91cm)
<b>BDS4836</b>	Plain Drape 48" x 36" (122 x 91cm)
<b>BDS4848</b>	Plain Drape 48" x 48" (122 x 122cm)
<b>BDS7248</b>	Plain Drape 72" x 48" (182 x 122cm)

#### PLAIN SURGICAL DRAPES - BALLOON CLOTH - DOUBLE PLY

<b>BDS1818DBL</b>	Double Drape 18" x 18" (45cm x 45cm)
<b>BDS2418DBL</b>	Double Drape 24" x 18" (60 x 45cm)
<b>BDS2424DBL</b>	Double Drape 24" x 24" (60 x 60cm)
<b>BDS3624DBL</b>	Double Drape 36" x 24" (91 x 60cm)
<b>BDS3636DBL</b>	Double Drape 36" x 36" (91 x 91cm)
<b>BDS4836DBL</b>	Double Drape 48" x 36" (122 x 91cm)
<b>BDS4848DBL</b>	Double Drape 48" x 48" (122 x 122cm)
<b>BDS7248DBL</b>	Double Drape 72" x 48" (182 x 122cm)

### Fenestrated Surgical Drapes

Available in green balloon cloth (lightweight with fine weave) in either single or double thickness.

#### FENESTRATED SURGICAL DRAPES - BALLOON CLOTH - SINGLE PLY

<b>BDSF1818</b>	Fenestrated Drape 18" x 18" 2" x 1" Hole
<b>BDSF2424</b>	Fenestrated Drape 24" x 24" 4" x 1.5" Hole
<b>BDSF3636</b>	Fenestrated Drape 36" x 36" 5" x 2" Hole
<b>BDSF4848</b>	Fenestrated Drape 48" x 48" 7" x 3" Hole

#### FENESTRATED SURGICAL DRAPES - BALLOON CLOTH - DOUBLE PLY

<b>BDSF1818DBLTHICK</b>	Fenestrated Drape Double 18" x 18" 2" x 1" Hole
<b>BDSF2424DBLTHICK</b>	Fenestrated Drape Double 24" x 24" 4" x 1.5" Hole
<b>BDSF3636DBLTHICK</b>	Fenestrated Drape Double 36" x 36" 5" x 2" Hole

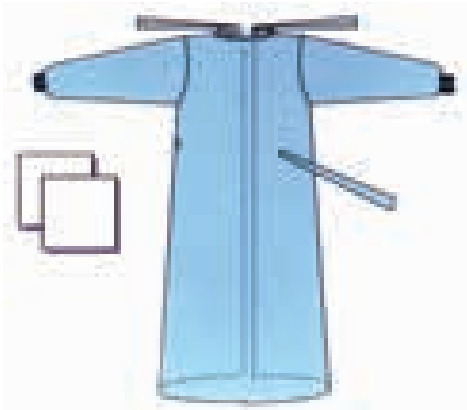
## Disposable Gowns, Drapes & Towels

Most veterinary autoclaves sterilise cloth drapes unreliably. Packs containing materials should be autoclaved using a vacuum autoclave. Disposables provide an alternative in that they require no cleaning, laundering, folding, packing and autoclaving.

The cost is no longer prohibitive particularly when bought by the case. Below is a useful section of what is available. If you require a specific pack not shown please call **0845 130 9596**. Samples are available on request.

Or view our website [www.vetinst.com](http://www.vetinst.com)

### Surgical Gown Disposable - Standard



#### SURGICAL GOWNS - STANDARD

<b>DG003001</b>	Surgical Gown (Single) Medium Standard plus 2 Hand Towels
<b>DG003001/30</b>	Surgical Gown (Box of 30) Medium Standard plus 2 Hand Towels
<b>DG003002</b>	Surgical Gown (Single) Large Standard plus 2 Hand Towels
<b>DG003002/30</b>	Surgical Gown (Box of 30) Large Standard plus 2 Hand Towels
<b>DG003003/30</b>	Surgical Gown (Box of 30) Large Long Standard plus 2 Hand Towels

### Surgical Gown Disposable - Reinforced



#### SURGICAL GOWNS - REINFORCED

<b>DGI13401</b>	Surgical Gown (Single) Medium Reinforced plus 2 Hand Towels
<b>DGI13401/30</b>	Surgical Gown (Box of 30) Medium Reinforced plus 2 Hand Towels
<b>DGI13402</b>	Surgical Gown (Single) Large Reinforced plus 2 Hand Towels
<b>DGI13402/30</b>	Surgical Gown (Box of 30) Large Reinforced plus 2 Hand Towels
<b>DGI13403/30</b>	Surgical Gown (Box of 30) XLarge Reinforced plus 2 Hand Towels

## Masks and Caps



Tie Back Style Cap

Beret Style Cap

### MASKS & CAPS

<b>TW0011</b>	Disposable Caps Tie Back (50)
<b>TW001100</b>	Disposable Caps Tie Back (200)
<b>TW0012</b>	Disposable Masks (50)
<b>TW001111</b>	Disposable Caps Beret Style (60)
<b>TW001110</b>	Disposable Caps Beret Style (120)

## Surgeon's Gloves

Available in both latex or latex free, Veterinary Instrumentation surgeons gloves have been shown to add significantly to aseptic technique. Absolutely essential for any orthopaedic procedure.

### SURGICAL GLOVES

<b>352511</b>	Surgical Gloves Latex (50)	Size 5.5
<b>352512</b>	Surgical Gloves Latex (50)	Size 6
<b>352513</b>	Surgical Gloves Latex (50)	Size 6.5
<b>352514</b>	Surgical Gloves Latex (50)	Size 7
<b>352515</b>	Surgical Gloves Latex (50)	Size 7.5
<b>352516</b>	Surgical Gloves Latex (50)	Size 8
<b>352517</b>	Surgical Gloves Latex (50)	Size 8.5
<b>352518</b>	Surgical Gloves Latex (50)	Size 9
<b>352511LF</b>	Surgical Gloves Latex Free (10)	Size 5.5
<b>352512LF</b>	Surgical Gloves Latex Free (10)	Size 6
<b>352513LF</b>	Surgical Gloves Latex Free (10)	Size 6.5
<b>352514LF</b>	Surgical Gloves Latex Free (10)	Size 7
<b>352515LF</b>	Surgical Gloves Latex Free (10)	Size 7.5
<b>352516LF</b>	Surgical Gloves Latex Free (10)	Size 8
<b>352517LF</b>	Surgical Gloves Latex Free (10)	Size 8.5
<b>352518LF</b>	Surgical Gloves Latex Free (10)	Size 9

## Non-sterile Drapes suitable for steam sterilisation 134°

Practices which prefer not to launder cloth drapes but do not wish to switch to fully pre-sterile disposables have the option of sterilising their own disposable drapes. The Drapes are available in two materials, one of which is waterproof in 3 ply, one of which is an impervious water repellent plastic film. Strike through is not possible with this drape.

### NON-STERILE DRAPES FOR STEAM STERILISATION 134°

<b>DD928002</b>	3ply Waterproof 75 x 90cm (Box of 250)
<b>DDCB03</b>	Water Repellent 60 x 90cm (Box of 200)
<b>DDCB33</b>	Water Repellent 70 x 90cm (Box of 200)
<b>DDCB13</b>	Water Repellent 90 x 137cm (Box of 100)

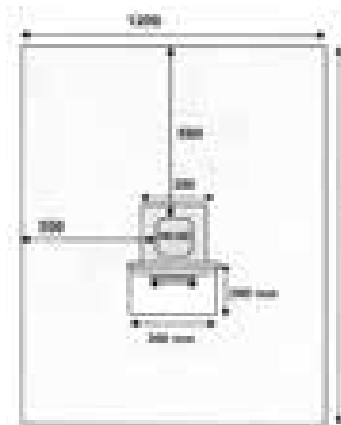
## Set-up and Trolley Covers Sterile

Plastic, waterproof, sterile. A Basic Cover for tables, instrument trays, Mayo tables etc.

### SET-UP AND TROLLEY COVERS STERILE

<b>DD205002</b>	Sterile Plastic Cover 120cm x 160cm (70)
<b>DD209001</b>	Sterile Plastic Cover 95cm x 150cm (70)

## Incise Drape with Fluid Collection Pouch



Arthroscopy is messy. Collection of fluid run off will minimise what falls to the floor.

This Opaque Plastic Film Drape has a 100mm x 100mm incise area and a 200mm x 300mm fluid collection pouch.

Free sample on request.

### INCISE DRAPE WITH FLUID COLLECTION POUCH

<b>DD198961</b>	Incise Drape with Pouch (Box of 40)
<b>FCP2527</b>	Fluid Collection Pouch 25cm x 27cm Sterile (200)

## Draping and Theatre Wear Full Catalogue

The Drapes and Theatre Wear shown in this section of the catalogue represents a small fraction of the items available. Sterile drapes are available in a variety of materials each having different characteristics and pricing.

Please request our full illustrated catalogue which includes individual items and a large range of drape sets. Samples available.

Provided you are willing to take a full box we can supply anything.



Visit [www.vetinst.com](http://www.vetinst.com) to view or download a copy of the catalogue.

## Adhesive Antibacterial Impregnated Drapes

### CLEAR ADHESIVE SURGICAL DRAPES WITH POVIDINE

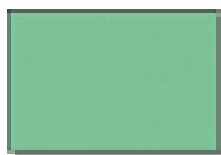
<b>AD1420</b>	14cm x 20cm	20 Pieces/ box
<b>AD2030</b>	20cm x 30cm	20 Pieces/ box
<b>AD3045</b>	30cm x 45cm	20 Pieces/ box
<b>AD4560</b>	45cm x 60cm	10 Pieces/ box
<b>ID6650</b>	loban™ Drape 56 x 45cm	(Single)

## Buster Operation Cover (Disposable) Sterile

### BUSTER OPERATION COVER

<b>141840</b>	Buster Op Cover Sterile Plastic Drape. 120cm x 120cm Box 25
---------------	--

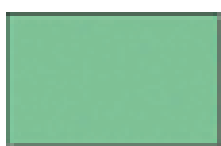
Utility Drape (Disposable) Sterile



UTILITY DRAPE

- DD3939** Utility Drape 98cm x 98cm (Single)
- DD4458** Utility Drape 112cm x 145cm (Single)
- DD4472** Utility Drape 112cm x 180cm (Single)
- DD5777** Utility Drape 145cm x 193cm (Single)

Utility Drape (Disposable) Sterile



UTILITY DRAPE

- DD128805/40** Utility Drape 75 x 75cm (Box of 40)
- DD128805/160** Utility Drape 75 x 75cm (Box of 160)
- DD128814/40** Utility Drape 75 x 90cm (Box of 40)
- DD128814/160** Utility Drape 75 x 90cm (Box of 160)
- DD128806/20** Utility Drape 90 x 150cm (Box of 20)
- DD128806/80** Utility Drape 90 x 150cm (Box of 80)
- DD128807/23** Utility Drape 160 x 75cm (Box of 23)
- DD128807/46** Utility Drape 160 x 75cm (Box of 46)

Adhesive Operating Drape (Disposable) Sterile

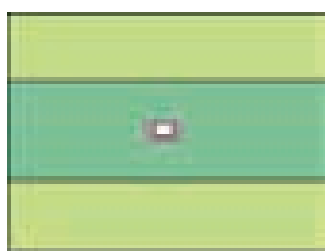


Dashed area shows adhesive

ADHESIVE OPERATING DRAPE

- DD128801/40** Adhesive Operating Drape 75 x 75cm (Box of 40)
- DD128801/160** Adhesive Operating Drape 75 x 75cm (Box of 160)
- DD128813/65** Adhesive Operating Drape 75 x 90cm (Box of 65)
- DD128813/160** Adhesive Operating Drape 75 x 90cm (Box of 130)

Adhesive Aperture Drape (Disposable) Sterile



Dashed area shows adhesive

ADHESIVE APERTURE DRAPE

- DD128810/10** Adhesive Aperture Drape 200 x 300cm with 9 x 22cm Aperture(Box of 10)
- DD128810/20** Adhesive Aperture Drape 200 x 300cm with 9 x 22cm Aperture(Box of 20)

Universal Set - Minor (Disposable) Sterile



Dashed area shows adhesive

Universal set of Drapes - Minor. Set comprises:

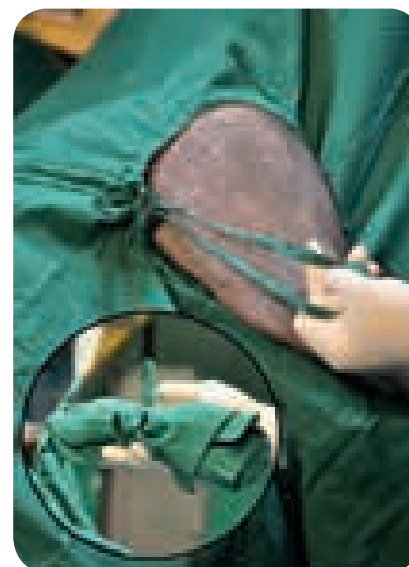
- 2 x Op Towels (75 x 75cm)
- 2 x Medium Drapes (160 x 175cm)

UNIVERSAL SET - MINOR

- DD148803/9** Universal Set - Minor (Box of 9)
- DD148803/18** Universal Set - Minor (Box of 18)

JB Drawstring and Foot Drapes

Jane Trinder BVM&S MRCVS has come to us with a couple of ingenious products. The first of which is a solution for the long standing problem of how to stop drape slippage with whole limb preparations. This can be quite a challenge, especially if you start moving a limb around a lot during surgery. Her solution has been to create a reusable drawstring drape which worn over the leg 'like a poncho' has the drawstring tightened to provide a tight fit and reduce slippage.



It provides much better coverage than many multi-drape set-ups and reduces the over-reliance on using loads of towel clips.

Jane has also developed a Reusable Foot Drape. These Drapes are very easy to use, being much better than wrapping a foot in a standard drape. They have the added advantage that they can be partially undone with minimal effort mid-procedure to check limb alignment.

JB DRAWSTRING DRAPES

- JBDD24242** JB Drawstring Drape 24" x 24" with 2" Hole (Single)
- JBDD24244** JB Drawstring Drape 24" x 24" with 4" Hole (Single)
- JBDD36366** JB Drawstring Drape 36" x 36" with 6" Hole (Single)
- JBDD48728** JB Drawstring Drape 48" x 72" with 8" Hole (Single)
- JBDDSET** JB Drawstring Drape Set

JB FOOT DRAPES

- JBFD6** JB Foot Drape Small 6" Long (Single)
- JBFD9** JB Foot Drape Medium 9" Long (Single)
- JBFD12** JB Foot Drape Large 12" Long (Single)
- JBFD15** JB Foot Drape Extra Large 15" Long (Single)
- JBFDSET** JB Foot Drape Set